

The AIRMAGNET

Wireless Handheld Analyzer

The Wireless Market

802.11-based Wireless LANs (WLANs) have quickly emerged as one of the most important assets in the enterprise technology landscape. Low costs of ownership and the need to extend existing networks to a mobile user base has steadily fueled the adoption of Wi-Fi across all industries.

However, much like the evolution of Ethernet before it, the rate of 802.11 implementations have outpaced the adoption of the professional tools and practices needed to properly manage these networks. This has left security and network professionals to combat a new breed of network threats with outdated tools that were originally designed for a wired infrastructure.

Unlike their wired counterparts, WLANs are in constant flux, and are unbound by physical barriers. Each station in the network represents a potential point of weakness if not properly configured and monitored. As a result, professionals need tools tailored to the demands of Wi-Fi, helping them to identify and resolve issues quickly.

This is the unique domain of AirMagnet's Wireless Handheld Analyzer. Designed to make Wi-Fi as secure and reliable as its Ethernet predecessors, the AirMagnet Handheld provides a single solution to manage the security, performance, and connectivity of 802.11 networks in a single mobile application.

A complete set of tools in a single, highly usable application that operates on a Pocket PC

The AirMagnet Handheld Solution

The AirMagnet Handheld brings together the industry's most advanced tools and intelligence in a solution that can go anywhere and is easy to use.

With the ability to automatically detect and alert on over 80 wireless Security and Performance conditions, the AirMagnet Handheld keeps networkers on top of potential threats as they develop. Channel, Infrastructure, and Packet Data are delivered through an intuitive user interface - allowing users to spend their time solving problems instead of interpreting cumbersome packet decodes. Additionally, with built in tools for Site-Surveying, Connection Troubleshooting, coverage mapping, and support for all 14 channels in use worldwide, the AirMagnet Handheld offers the most complete solution for any wireless environment.

The end result is the industry's best Wi-Fi management tool with a unique combination of superior functionality and usability.

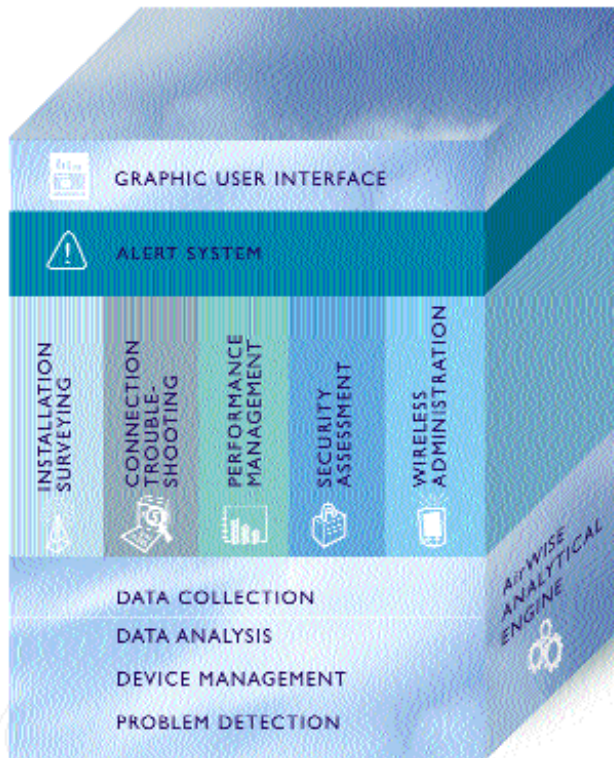
The AirMagnet Handheld product suite includes administration tools in the areas of:

- Security Management
- Performance Management
- Installation Surveying
- Connection Troubleshooting
- Wireless Administration

AirMagnet makes it easy to go where the network is



AirMagnet Handheld Architecture



Intelligent Analytical Engine

The AirMagnet Handheld Analyzer is powered by AirWISE®, the company's patent pending intelligent analytical engine that proactively identifies low level problems before they can affect the network.

AirWISE runs continuously in the background, automatically collecting a complete set of network statistics, identifying and tracking wireless devices and their distinguishing characteristics, pinpointing WLAN problems, and suggesting potential solutions to network problems.

Improved Wireless Administration

The 3.0 Release of the AirMagnet Handheld introduces dozens of improvements to the industry's leading Wi-Fi management tool - making it easier for networkers to stay on top of any wireless environment.

12 New Security and Performance Alarms keep users on the cutting edge of wireless administration, automatically detecting network events that could lead to problems.

GPS Support allows users to collect longitude and latitude information when monitoring their network infrastructure - opening the door for outdoor site-surveys, and device location sensing.

Multiple SSID Support allows users to see all SSIDs used by a single AP, making it easy to track SSIDs used for multiple VLANs and VoIP.

Support for AirMagnet Reporter allows users to save and analyze their troubleshooting sessions with 50 customizable reports designed for every level of a management team.

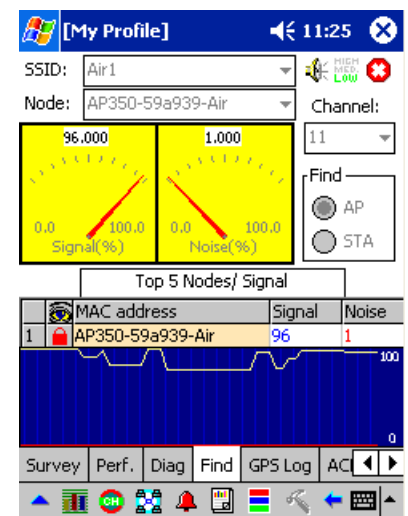
Support for Vivato Wireless Switches allow users to monitor the latest planar antennas as they would any other AP.

Configurable Alarms allow users to set alarm thresholds to their environment ensuring that alerts are tuned to the needs of the user.

Profile Management saves alarm settings for multiple Wireless LANs, and built-in Address Books allow for logical name mapping.

Object Oriented Traces - In addition to capturing packets, users can now capture and save object information such as channel statistics, devices, and alarm data.

World-Mode allow users to monitor all 14 channels in the 802.11b spectrum, allowing users to detect problems occurring in "unauthorized" bands.



AirMagnet Find Tool

Monitor Security Policies

Ensure APs and Clients maintain proper security measures including:

WEP	TLS
LEAP	WPA
PEAP	FORTRESS
TKIP	PPTP VPN
MIC	L2TP VPN
802.1X	SSH VPN
TLS	IPSEC VPN

Find Tool

Track down the physical location of any wireless device in the network.

GPS Logging

Detect exactly how far RF signals extend beyond your physical location.

A comprehensive suite of security tools

Performance Management

The AirMagnet Handheld helps network professionals stay on top of the performance curve, with an Expert Performance Analysis Tool that monitors 802.11 networks and identifies the potential source of performance problems as they are happening.

Network Summary View provides a simultaneous view of all 14 802.11b channels, with the ability to drill down into detail on any node in the network.

Performance Alarms monitor the WLAN environment and alarms against 27 wireless conditions that can cause performance problems. Alarms include high packet error rates, Hidden Node Problems, AP Interference, low transmission rates, and many others.

Channel Bandwidth Monitor tracks channel interference, multicast/broadcast storms, poor RF signals, bridge loops and low transmission rates. RF signals can be displayed in dBm or %.

Channel Interference Monitor monitors channel throughput and alerts when a channel is overloaded with Access Points or Stations.

Channel Noise Monitor provides an alert if a channel is experiencing interference from an unidentified source.

Connection Troubleshooting

Without intelligent tools, the process of troubleshooting a problem connection can be an incredible drain on time and resources. To expedite the resolution of these issues, the AirMagnet Handheld leverages an Intelligent Connection Diagnostics Utility.

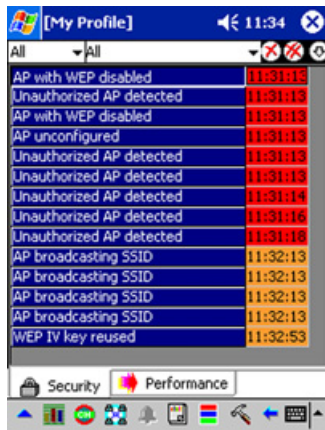
Connection Mismatch Tool identifies any mismatch of SSIDs, WEP keys, transmission rates, or RF channels—a major source of connection problems.

Failure Analysis Tool helps isolate the source of a transmission failure, including authentication, re-association, speed mismatch and hardware failures.

Real-Time Packet Capture and Decode Function captures and decodes data packets and displays them in real time.

Signal Quality Tool can monitor fluctuations in signal quality from an Access Point, to identify malfunctioning hardware or potential multipath interference in a location.

Basic LAN Troubleshooting Tools help isolate connectivity problems selectively to and from a specific Access Point; including DHCP Renew, Ping, Traceroute, Whois, and DNS Lookup.



AirMagnet Alerts

Security Management

Wireless LANs have forced organizations to adapt their approach to network security. Each station must adhere to established policies or risk compromising the entire network.

AirMagnet provides the requisite tool to insure that every device in the network complies with established policies, while proactively identifying 38 specific wireless threats and weaknesses.

Rogue AP and Client Detection

Know if an unauthorized device is installed on the network. AirMagnet includes a Find Tool to track down rogue devices once they are identified.

Wireless Denial-of-Service Detection

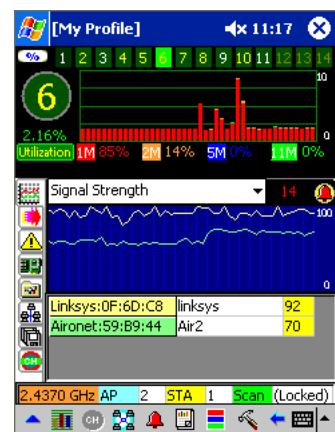
Know when intruders attempt to deny network access, by saturating channels or flooding AP Association Tables. Multiple alarms cover emerging attacks such as 802.1x DoS attacks, RF Jamming, and Association and Authentication DoS attacks.

AP Impersonation Detection

Indicates an intruder attempting to invade the network by emulating (or spoofing) a registered MAC address.

Security Infrastructure Monitoring

alerts IT to underlying security threats such as Slow Key Rotation, Crackable IVs, EAP Methods Under Attack, Stations With Open Authentication and more.



Channel View

Installation Surveying

When a WLAN is not designed and installed properly, the consequences can be chronic user complaints ranging from dead spots and low transmission rates to connectivity issues and increased network latency. The AirMagnet Handheld gives network professionals the necessary tools to plan and install their 802.11 infrastructure:

Comprehensive Drilldown Functions allow the detailed investigation of a single Access Point or Station, to evaluate signal quality and various configuration options—with the flexibility to drill down to the level of information required by the task.

Network Site Survey Tool eases the collection of RF signals and performance data, so network nodes can be placed for maximum functionality.

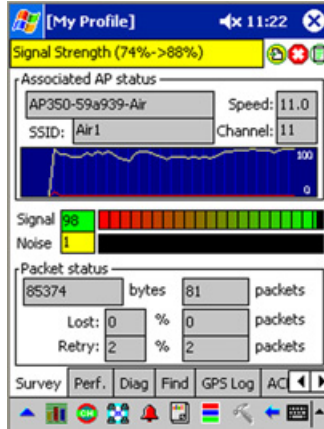
Coverage Tool

Exposes how well a particular location is covered by its APs and allows users to identify the boundaries between competing APs.

Channel Signal Strength/Quality Tools help identify and isolate co-channel interference from unknown Access Points and other potential sources, which help prevent potential conflicts or performance issues.

Export Function allows survey data to be exported for management reporting.

Antenna Signal Alignment Meter provides fast response time signal tracking to achieve the optimal signal reception in line-of-sight bridge-to-bridge alignment.



Site Survey Tool

The Comprehensive Solution

The AirMagnet Handheld gives network and security professionals the right tools to deploy and manage their WLANs, on a platform that lets them go where the network is. With functionality designed for wireless, AirMagnet offers users the control they need to deliver reliable and secure WLAN performance.

AirMagnet Handheld

- AirMagnet Handheld Software CD
- Wireless Card **sold separately**
- Pocket PC **sold separately**

AirMagnet Handheld CF

- AirMagnet Handheld Software CD
- Wireless Card **sold separately**
- Pocket PC **sold separately**

AirMagnet Handheld PAK*

- AirMagnet Handheld Software CD
- Cisco Aironet AIR-PCM352 802.11b PC card
- HP iPaq 3850 Pocket PC with 64MB 206 MHz 16-Bit (64K Colors)
- HP iPaq single slot PC card expansion pack plus

* Available in North America only.

Contact AirMagnet

To order the AirMagnet Handheld, or for more information about the company, contact us at 408-400-0200 or at info@AirMagnet.com.

AirMagnet, Inc.
894 Ross Drive, Suite 200
Sunnyvale, CA 94089

www.AirMagnet.com



Supported Wireless Cards

- Cisco 350 Series 802.11b PCMCIA wireless LAN Adapter
- EnGenius EL-2511 Wireless Compact Flash Card
- Symbol LA4121 802.11b Wireless LAN Adapter
- Proxim Harmony 802.11b PC Card