

AiroPeek™

Wireless Protocol Analyzer

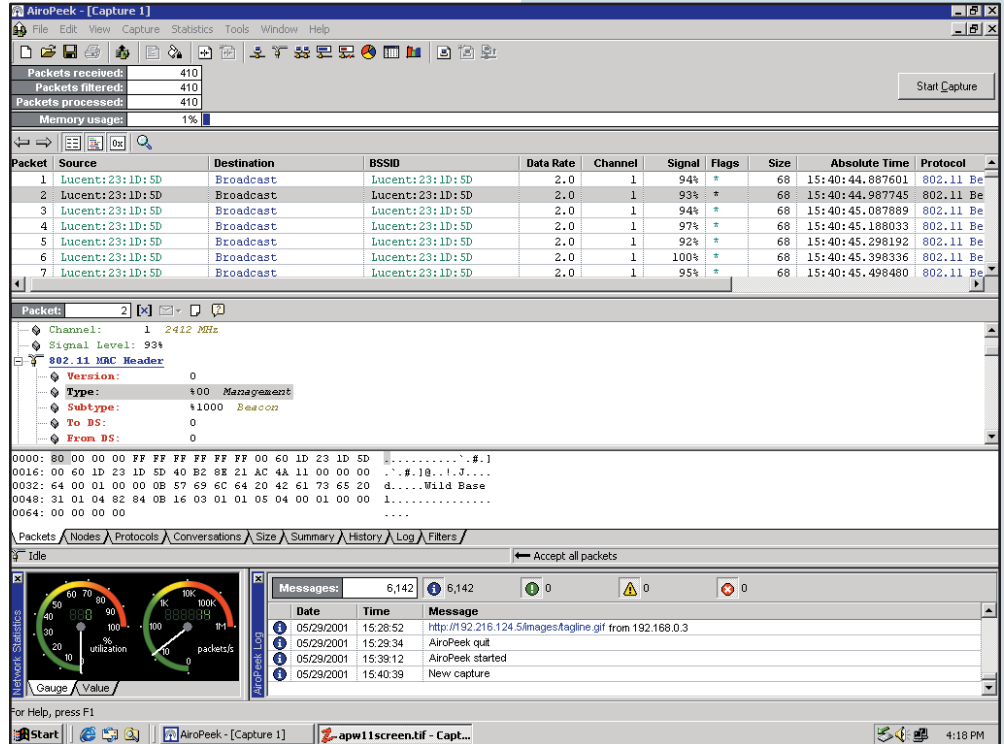
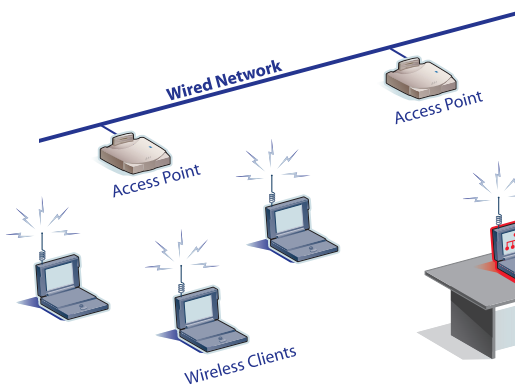
Wireless LAN Analysis with AiroPeek

The world is going wireless. From the corporate enterprise to the college campus, from health care conglomerates to warehousing industries, business managers are discovering the vital role a wireless LAN plays in keeping increasingly mobile personnel connected. Service providers are extending new data and voice services to markets created by 802.11 in-building wireless networks. Third-world countries are emerging as trendsetters by deploying wireless networks in places where wired networks were never feasible, bringing entirely new constituencies on-line.

What does this mean for today's network manager? Wireless networks require the same kind of traffic analysis, protocol decoding, and troubleshooting as their wired counterparts, but with some unique demands. A wireless protocol analyzer must also provide information specifying the channel number and radio frequency at which packets are transmitted, as well as the speed and signal strength of a transmission.

WildPackets' AiroPeek, a full-featured packet analyzer for IEEE 802.11 wireless LANs, contains all of the network troubleshooting expertise familiar to users of our award-winning EtherPeek. In addition, AiroPeek is uniquely designed to meet the challenges of network management in the wireless environment.

the powerful and affordable wireless LAN analyzer



Troubleshooting WLANs

Protocol analyzers pinpoint the source of network problems and security leaks by revealing the detailed information contained in a packet. In addition to standard analysis and troubleshooting features, including the status, length and timestamp of a packet, AiroPeek tells you:

- The packet transmission speed;
- The channel number and radio frequency at which the packet was transmitted; and
- The signal strength of the transmission in which the packet was received.

These product attributes and others combine to provide a comprehensive tool capable of identifying and solving network anomalies.

Isolate rogue access points with ease

Readily assess WLAN security issues

Easily manage network and access point configuration issues



"AiroPeek has a BMW's upscale capabilities for network managers with Honda budgets.

Building upon the clean functionality of its EtherPeek analyzer, WildPackets delivers a solid product that lets you monitor and analyze your wireless network."

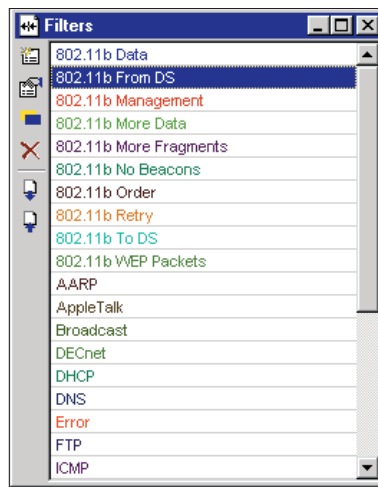
Dave Molta, Network Computing

"AiroPeek, an affordable and easy-to-use wireless protocol analyzer...provides useful information on wireless LAN security, radio signal strength and bandwidth utilization."

Andrew Garcia, eWeek



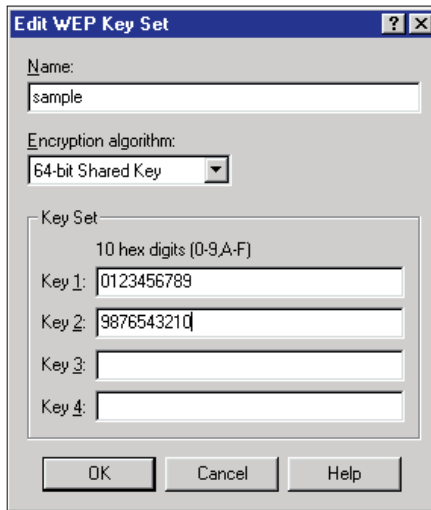
AiroPeek was selected for the N+I 2001 Tokyo "Best of Show" Special Award in the network management category from a field of eight contenders.



Packet Filtering

Setting filters on a suspicious node or protocol allows you to isolate and focus on problem traffic. A filter will restrict the flow of packets in a capture window based on a specific packet parameter, such as an address, protocol, port, value, or length.

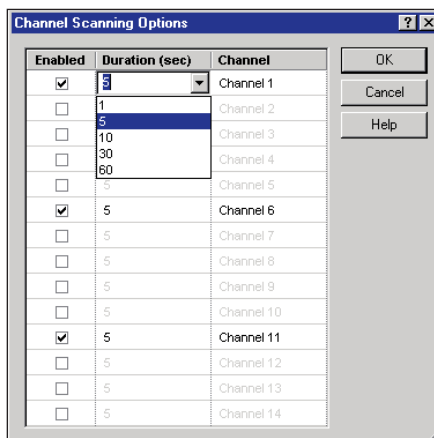
AiroPeek's Automatic Filtering from Packet View allows you the option of setting a filter based on the criteria within a particular problem packet directly from the packet decode display, so you can immediately capture all of the traffic fitting these precise conditions. You can then choose to display statistics calculated only on the packets that pass the filter.



Wireless network security

Identifying potential security problems is essential for wireless network managers. AiroPeek can be set to scan continuously for failed authentication attempts, capturing all the traffic exchanged in these attempts and making it possible to identify a potential attacker.

AiroPeek allows users to specify the WEP (Wired Equivalent Privacy) shared key set for their network. This means that AiroPeek will decode and decrypt an encrypted packet with your user-defined WEP key, allowing you to identify rogue transmitters, including Access Points and users. With Advanced Filtering, AiroPeek can be set to watch for WEP encrypted traffic to or from any MAC address which is NOT a known user of the system. AiroPeek can also perform post-capture WEP decryption.



Channel Scanning and Selection

AiroPeek will scan the channels in use on your WLAN and tell you which channels are the most active or in use. You can specify the parameters AiroPeek will use to search for 802.11 traffic set in the Channel Scanning Options dialog.

AiroPeek allows you to select the channel you want to capture on after finding out which channels are the most active. Alternately, select BSSID (Basic Service Set) or ESSID (Extended Service Set) to capture packets.



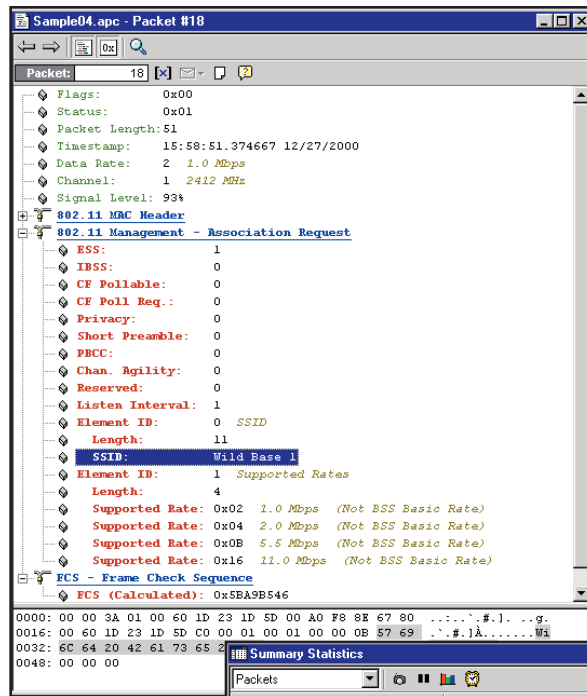
Packet Decodes and Display

AiroPeek can fully decode all 802.11a and 802.11b protocols, displaying management, control and data packets as well as all higher-level network protocols such as TCP/IP, AppleTalk, NetBEUI and IPX. AiroPeek will capture all traffic conforming to the 802.11a OFDM and 802.11b DSSS standards and types.

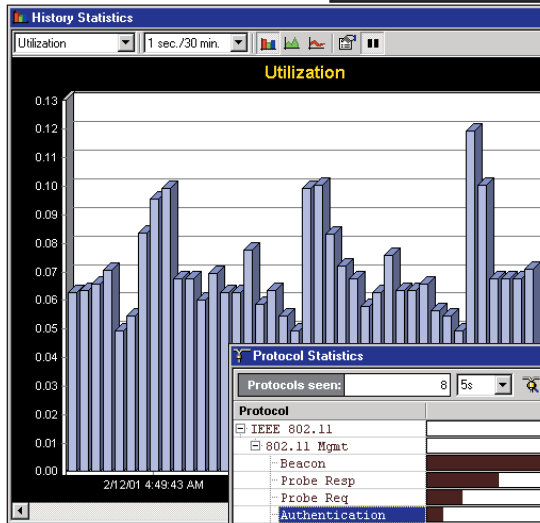
AiroPeek's customizable 3-pane view allows you to display a packet capture list, a single packet decode, as well as the hex view of raw data, altogether or in any combination. You can navigate through multiple selected packets to reconstruct the threads of network conversations. Multiple capture windows can be open simultaneously for easy comparison of packet views, protocol usage, or total traffic vs. traffic subsets.

Real-time Statistics

Is your wireless network performing as expected? By displaying 802.11 statistics, AiroPeek can tell you what deserves attention on your wireless network. AiroPeek collects data in a wide variety of parameters (such as by node, history, size, error, protocol, conversation), presented in statistics windows. In addition, the Network Statistics window gives you a quick view of overall network health and utilization. You can also take "snapshots" of the Summary Statistics window at different times for easy comparisons of wireless network activity.



802.11 Packet Decode information



Statistic	Current	Snapshot 3	Snapshot 2
General			
Start Date	05/31/2001	05/31/2001	05/31/2001
Start Time	20:41:49	20:41:49	20:41:49
Duration	00:25:58	00:24:44	00:24:44
Total Packets	21,792	20,763	20,752
Total Bytes			
Total Broadcast	15,822		
Total Multicast	5,280		
Average Utilization (Kbits/s)	8.438		
Counts			
Physical Addresses Seen	4		
AppleTalk Addresses Seen	2		
IP Addresses Seen	0		
DECnet Addresses Seen	0		
Protocols Seen	16		
802.11b Analysis			
AppleTalk Analysis			
Checksums			
Duplicate Addresses			

Features

Channel Scanning/Surfing

Customizable Displays

WLAN Protocol Decodes

Wired Equivalency Privacy (WEP) Decryption

Automatic Packet Filtering

Automated Names Table

Plug-ins expand AiroPeek's functionality

AiroPeek Benefits

Search for specific 802.11 traffic by user-defined parameters.

3-pane display allows variety of packet decode display options. Display of Nodes and Conversations can be limited to user-specified "Top X" range.

AiroPeek fully decodes all 802.11a and 802.11b wireless protocols as well as all higher-level network protocols.

AiroPeek will detect unauthorized network intrusion attempts with real-time and post-capture WEP decryption.

Value Filter Auto-Creation from Decode Displays. "Accept Matching" and "Reject Matching" Filter Modes.

Assign names to all the nodes on your network to more easily identify the source and destination of traffic. AiroPeek's Advanced Name Table stores names in groups, list ports and sockets, node types and more.

Plug-ins include InternetAttack, ICMP Details, Telnet, Web URL, Checksums, SMTP Analysis, and 802.11 Analysis Plug-In.



Multiple, Simultaneous Capture Windows

As with all WildPackets "Peek" products, AiroPeek has the ability to open multiple live capture windows simultaneously. This means that new capture windows can be created in real-time to focus on specific traffic elements discovered in an overall traffic capture window.

WildPackets Academy

WildPackets Academy offers comprehensive network analysis training, meeting the professional requirements of network managers at all levels. All course offerings are available in public venues and as customizable on-site programs. Course offerings include:

- Foundations of Network Protocol Analysis
- Network Troubleshooting Methods Using EtherPeek
- TCP/IP Protocol Analysis
- 802.11 Wireless Network Analysis Using AiroPeek

QuickStart e-Seminars are hour-long programs focusing on detailed aspects of using AiroPeek in real-life situations, led by a WildPackets Academy instructor.

See www.wildpackets.com/corporate/events for current schedule and complete details.

For complete course outlines and schedules, visit www.wildpackets.com/academy

Technical White Papers

Read our papers on wireless security audits and on how expert analysis provides automatic problem diagnoses for today's network manager.

Visit www.wildpackets.com/resources to get copies of our "AiroPeek NX and Wireless Security" and "Expert Packet Analysis Paper."

Ordering Information

WildPackets products are available from our Channel Partners, directly from WildPackets, or from our electronic purchase area at: www.wildpackets.com/demo_buy

Download a Demo!

Demos are available for our products at: www.wildpackets.com/demos

AiroPeek NX Product Maintenance

One year of Level I Maintenance, including all product updates and upgrades, is included in the purchase price. WildPackets' Maintenance Program can also provide enhanced levels of service and extends the benefits and product update period (Level II and Level III Maintenance). Please visit www.wildpackets.com/support for details about our maintenance offerings.

Network Analysis Expert Certification

A properly qualified networking professional is the best person to support today's complex computer communication infrastructures. The Network Analysis Expert Certification Program is completely vendor-neutral, and is positioned as an industry-standard method for demonstrating protocol analysis expertise. Please visit www.nax2000.com for more information.



WildPackets, Inc.

Since 1990, WildPackets has been developing powerful, affordable tools designed to simplify the complex tasks associated with designing, maintaining, troubleshooting and optimizing computer networks.

Solution Suites

Our solution suites perform a variety of network management tasks, including: performance management, fault management, throughput analysis, trend analysis and more. They are available for purchase in various configurations: single license, site license and bundles.

Our representative solution suites include:

Wireless Analysis
Remote Analysis
Gigabit Ethernet
Network Management Suitcases
Training Bundles

For more information, visit www.wildpackets.com/products

WildPackets

www.wildpackets.com

