

Netasyst Network Analyzer 1.0

Assuring Optimal Network Performance and Security

Product Overview

When your business is about to grind to a halt due to slow e-mail response time, it's time to implement a network management solution that enables you to not only identify problems associated with the e-mail system that 80 percent of small- and medium-sized businesses utilize—Microsoft® Exchange and Microsoft Outlook—but also quickly resolves these issues. Netasyst™ Network Analyzer enables you to reliably, flexibly, and cost-effectively monitor, troubleshoot, maintain, and secure your 10/100 LAN and 802.11 Wireless networks.

As a “Powered by Sniffer® Technologies” solution, Netasyst products leverage many of the features and functionality that worldwide enterprises have used to manage, secure, and plan the growth of their networks. Within minutes, you can configure the Netasyst software and begin tracking all the information flowing through your network. Netasyst functionality protects your network at every level, from the physical layer to the application layer. With the incorporation of Sniffer Technologies expert analysis system, you can easily pinpoint the root cause of problems such as slow application response times, IP address conflicts, and domain logon failures. Netasyst software utilizes host and connection packet monitoring, application response time tracking, and packet filtering and triggering to assess the entire set of transmitting stations on 10/100 LAN and 802.11 Wireless network segments. When the packets are examined for monitoring purposes, they can also be simultaneously captured and displayed for Expert analysis and fast problem resolution.

Netasyst software is ideal for managing local network segments in a campus environment or for field service engineers traveling from one site to another to perform network troubleshooting. With six offerings to choose from, you can upgrade your Netasyst offering to meet your ever-changing business needs.

Key Features and Benefits

Fast Problem Resolution

- Features an intuitive, consistent user interface across 10/100 LAN and Wireless topologies to provide quick data capture and presentation.
- Illustrates potential network issues as they occur and pinpoints problems for faster resolution.
- Provides a comprehensive view of the total wireless configuration, such as signal strength, to assist during deployment.

Accurate Network Planning

- Monitors and displays network usage over time.
- Enables day-to-day utilization tracking to effectively plan for change and growth.
- Delivers global statistics reports such as segment traffic, errors, size distribution, and utilization.
- Supports alarm reports for a complete understanding of unusual activity.

Security Risk Identification in Real-Time

- Enables the identification of potential problems based on pre-set trigger criteria to ensure network issues are automatically identified as soon as they occur.
- Expedites detection of unauthorized mobile users and potential security breaches with automatic rogue mobile unit discovery.
- Accelerates identification of rogue wireless units with single click import of autodiscovered “known devices.”

The Power to Optimize Your Network

For many small- and medium-sized businesses, the network is essential to conducting business. If the network goes down, or even if performance degrades, the condition needs to be fixed fast. A protocol analyzer provides the detailed view of network traffic needed to determine the source of the problem. It is like an x-ray machine for the

Netasyst Network Analyzer 1.0

Assuring Optimal Network Performance and Security

network. Without the detailed view of the network a protocol analyzer provides, problems would take much longer to be resolved, and you might make an incorrect diagnosis or break something that is functioning properly.

Best-in-Class Decodes

All data that travels on a network does so in the form of zeros and ones according to sets of rules—the protocols for the specific topology and application. A decode takes all of these zeros and ones and converts them into the proper syntax of the protocol that has been transmitted. Manually performing this conversion would be an arduous and time-consuming process, as well as one that introduces a high potential for error. Decodes are an important part of a protocol analyzer because they determine the amount of visibility you have into network and application traffic. You can't troubleshoot what you can't see. For example, if a protocol analyzer does not decode Microsoft Exchange, you won't be able to troubleshoot application problems unless you manually convert the data to the proper syntax of the protocol. Netasyst software, with more protocol decodes than the competition, eliminates this problem.

Expert Analysis

An Expert system is software that simulates the thought process of a human expert to solve complex problems. Netasyst's Expert system is focused on identifying and solving problems on 10/100 Ethernet and 802.11 (a) and (b) wireless networks. It applies the expertise that Sniffer Technologies has

accumulated over the past fifteen-plus years, far more than any other protocol analyzer company. Expert analysis also helps augment your staff with specialist knowledge and can act like a virtual network technician. This extensive knowledge base allows your IT staff to solve more problems at a much faster rate.

Alarms and Filters

Alarms automate the process of notifying you when probable error conditions exist, or application behavior has significantly departed from normal activity. They are especially useful for detecting elusive or intermittent problems that may occur at any time of the day or night. Triggering can take action when the problem occurs, save the information to disk, and alert the network technician automatically. Netasyst software provides many alarms, including over 150 Expert alarms that notify you of issues such as unusual utilization levels, increases in error rates, and slow response times. You can be notified by audible alarm, e-mail, beeper, pager, or SNMP trap.

Filters are important because they allow you to focus on the information that is relevant to the issue at hand. You are spared having to wade through irrelevant data and can resolve problems in the shortest amount of time. Netasyst filters provide a sophisticated mechanism for selecting by any combination of IP address, protocol, or application groups, such as SQL or AOL Instant Messenger, data patterns, error frames, and frames of a specific size. With the Netasyst software, creating a

filter from a host table or matrix map is only a click away.

Netasyst LAN

The goal of Netasyst LAN offerings (L, WL, LX, and WLX) is to keep your 10/100 Ethernet network running at peak performance levels. The analyzer captures frames, simultaneously building a database of network objects from observed traffic to detect network anomalies. Once Netasyst has isolated, analyzed, and categorized a problem it alerts you, explains the problem, and recommends corrective action.

Netasyst leverages Sniffer Technologies' Expert Analysis system to provide enhanced management automation, more comprehensive problem-solving information, and greater network visibility.

Netasyst Wireless

Netasyst wireless offerings (W, WL, WX, and WLX) provide a comprehensive solution for managing network applications and deployments on wireless LAN 802.11a and 802.11b networks. With its ability to decrypt Wired Equivalent Privacy (WEP)-based traffic, either precapture or post-capture, Netasyst functionality gives you unsurpassed troubleshooting flexibility. Expert analysis specific to wireless environments, enables Netasyst wireless offerings to quickly pinpoint security breaches in radio frequencies by unauthorized mobile users or rogue access points. By tracking all wireless behavior and displaying all known information, Netasyst Wireless offerings can rapidly

Netasyst Network Analyzer 1.0

Assuring Optimal Network Performance and Security

determine if an environment is overloaded or performing efficiently. This functionality ensures that performance issues are corrected, rogue wireless equipment is removed, and unauthorized mobile users are discovered so they no longer pose a security threat to the network.

Netasyst Wireless + LAN

Netasyst Wireless + LAN bundles (WL and WLX) provide the flexibility to monitor Wireless and LAN networks at the same time. Netasyst bundles enable the simultaneous monitoring of both the LAN and Wireless interface to provide full visibility from the Wireless network all the way to the LAN. Full visibility ensures that you can identify problems quickly.

The Netasyst product line includes six different product offerings:

Standard

Netasyst Network Analyzer—L (10/100 LAN)

Netasyst Network Analyzer—W (802.11 Wireless)

Netasyst Network Analyzer—WL (Wireless + LAN)

With Expert

Netasyst Network Analyzer—LX (10/100 LAN)

Netasyst Network Analyzer—WX (802.11 Wireless)

Netasyst Network Analyzer—WLX (Wireless + LAN)

Netasyst Value-Added Software Options

Sniffer Reporter Option

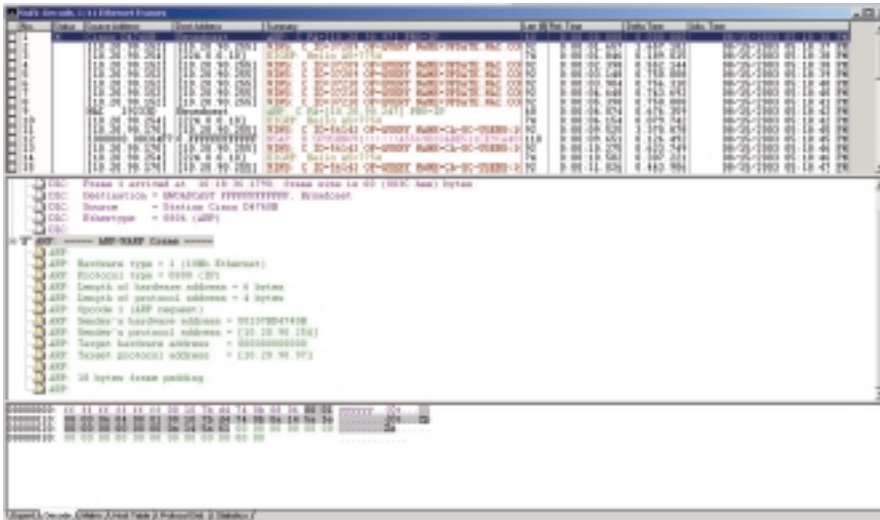
Sniffer Reporter provides valuable insight into network performance. This advanced reporting application allows you to generate graphical reports based on RMON1/RMON2 and similar data collected by the Netasyst application. From bandwidth usage to potential network degradation, Sniffer Reporter delivers in-depth data to help you plan for future network needs.

Available reports for Ethernet and Wireless include:

- Host table reports (top hosts by traffic, top hosts by protocol)
- Matrix reports (top conversations)
- Protocol distribution reports (top protocols)
- Global statistics reports (segment traffic, segment errors, segment size distribution, segment utilization)
- Alarm reports (alarm details, alarm timeline)

Netasyst Voice Option

The Netasyst Voice is a value-added package that integrates with the Netasyst Expert software products to provide the necessary insight into voice- and video-converged traffic. It addresses key issues and ensures successful Voice over IP (VoIP) network rollouts without degrading network response times. Working in conjunction with Expert technology, the Netasyst



Netasyst software decodes provide the complete picture to resolve your application issues quickly.

Netasyst Network Analyzer 1.0

Assuring Optimal Network Performance and Security

Voice option generates alarms critical to voice and/or video over IP implementations via analysis of jitter, packet loss, packet sequencing problems, and latency.

World-Class Training, Consulting, and Support

Sniffer University is a comprehensive educational resource for building and enhancing network professionals' skills in fault and performance management. Sniffer University has trained over 80,000 network professionals to date. The Sniffer Certified Professional Program provides network professionals industry-recognized accreditation as technical experts in the network management and protocol analysis disciplines.

Network Associates® Expert Network Services leverages our extensive experience in fault isolation, performance management, and protocol analysis to assist clients during all network growth

stages—from planning, design, and product deployment, through on-going management and emergency response. Our seasoned consultants provide critical expertise and an objective perspective to identify, prioritize, and resolve every client's individual performance and availability problems.

Network Associates PrimeSupport® Services offers essential product knowledge and rapid, reliable technical solutions. Over eighty percent of our technical staff hold industry certifications and/or technical degrees and five-plus years of experience in the IT industry. You can engage this high level of expertise through our extensive support portfolio, which consists of PrimeSupport Service Portal, Connect, Priority, and Enterprise. PrimeSupport is your key to maximizing processing uptime, revenue generation, and customer satisfaction.

System Requirements and Specifications:

- Pentium 600MHz or higher CPU
- 128MB RAM minimum (256MB recommended for Windows XP)
- 125MB free disk space
- CD-ROM drive
- 800x600 VGA monitor

Operating system:

- Microsoft Windows® 2000 (SP 3 or 4)
- Microsoft Windows XP (SP 1)

Netasyst LAN

Enhanced driver support for 10/100 LAN includes:

- Xircom CBE-x
- Xircom Realport-x
- Intel Pro/100
- IBM EtherJet
- Adaptec 62011

Netasyst Wireless

Enhanced driver support for 802.11a includes:

- Proxim Harmony Cardbus

Enhanced driver support for 802.11b includes:

- Symbol Technologies Spectrum24 Model 4121
- Cisco Systems Aironet 340/350
- Agere Systems ORiNOCO
- Enterasys RoamAbout

Optional Product Prerequisites

Sniffer Reporter

- Same requirements as Netasyst; installs over any Netasyst software package

Netasyst Voice Option

- Same requirements as Netasyst; installs over any Netasyst Expert enabled offering (LX, WX, and WLX)

All Network Associates® products are backed by our PrimeSupport® program and Network Associates Laboratories. Tailored to fit your company's needs, PrimeSupport service offers essential product knowledge and rapid, reliable technical solutions to keep you up and running. Network Associates Laboratories, a world leader in information systems and security, is your guarantee of the ongoing development and refinement of all our technologies.

3965 Freedom Circle | Santa Clara, CA 95054 | 800.764.3337 main

networkassociates.com



YOUR NETWORK. OUR BUSINESS.™

Network Associates, Sniffer, Netasyst, and PrimeSupport are either registered trademarks or trademarks of Network Associates, Inc. and/or its affiliates in the US and/or other countries. Sniffer® brand products are made only by Network Associates, Inc. All other registered and unregistered trademarks in this document are the sole property of their respective owners. ©2003 Networks Associates Technology, Inc. All Rights Reserved.

1-tnv-nts-001/0803