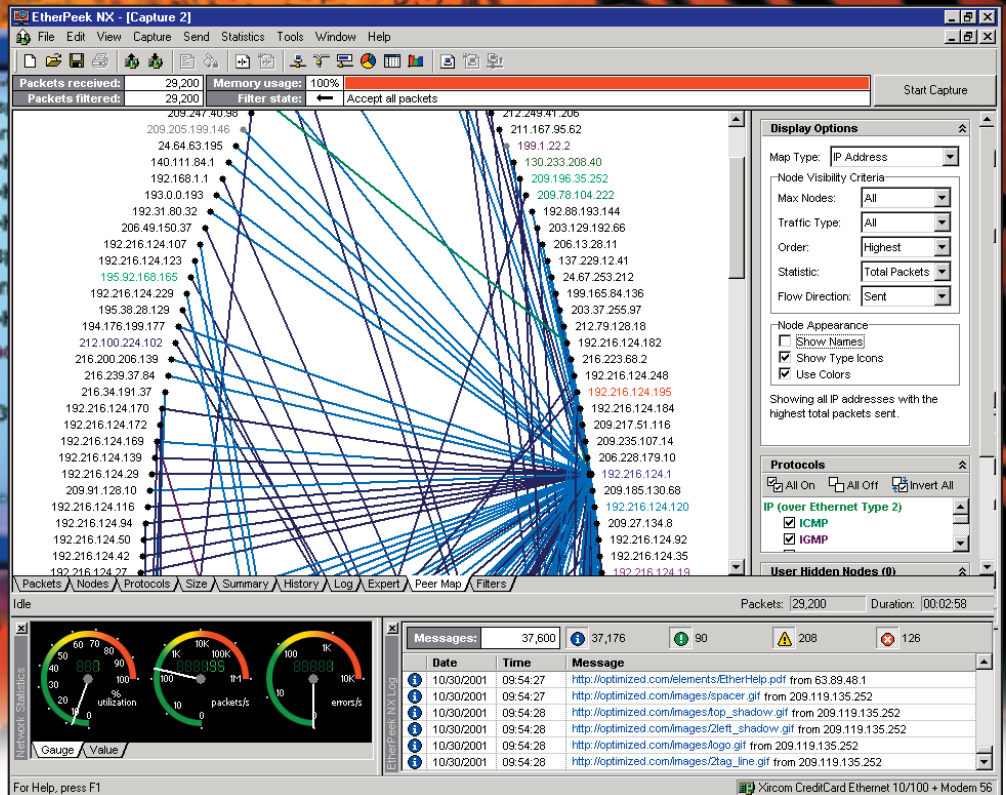


EtherPeek NX™

real-time expert packet analysis



The EtherPeek NX Peer Map plots network nodes on an expanding ellipse and connects all communicating peers by physical or IP address.

Expert Analysis with EtherPeek NX™

EtherPeek NX brings the power of Expert Analysis to WildPackets' award-winning EtherPeek technology.

As networks converge media and new technologies into increasingly diverse and complex infrastructures, IT Professionals look to Expert Systems to sort through, analyze, diagnose, and isolate network data. Expert Systems need to be precise in pinpointing problems, relevant for current networks and topologies, able to accurately detect real symptoms and diagnose real problems.

EtherPeek NX has been designed to excel at all of these requirements, incorporating industry-leading expert technology to provide precise, contemporary analysis of today's complex networks.

Combining EtherPeek's familiar feature set and award-winning UI with heuristics developed by experienced packet analysis professionals, WildPackets delivers another powerful, affordable tool to help you manage your network.

Real-time Expert Analysis

EtherPeek NX is the first and only protocol analyzer to offer both expert diagnostics and frame decoding in real-time, during capture. The Expert view, pictured above, provides expert analysis of latency, throughput, and over three dozen network problems in a conversation-centered view of traffic. Many of the test elements have user-defined settings and thresholds, allowing you to fine-tune the Expert System to precisely fit your network.

Expert System Developed by Networking Experts

The Expert System represented by NX has been created with the assistance of network engineers, professional consultants and high-level packet analysis instructors with many collective years of experience and training. The intelligence brought to bear on EtherPeek NX's expert system provides you with real-time, realistic indications of traffic conditions and problems on your network, rendered in an intuitive display.

Network Magazine's Product of the Year - May 2002

Network Computing's Well-Connected Award - May 2002

"EtherPeek NX is priced aggressively for a full-featured protocol analyzer with so many expert analysis features. Enterprises needing the ability to get to the root causes of network problems should consider this system seriously."

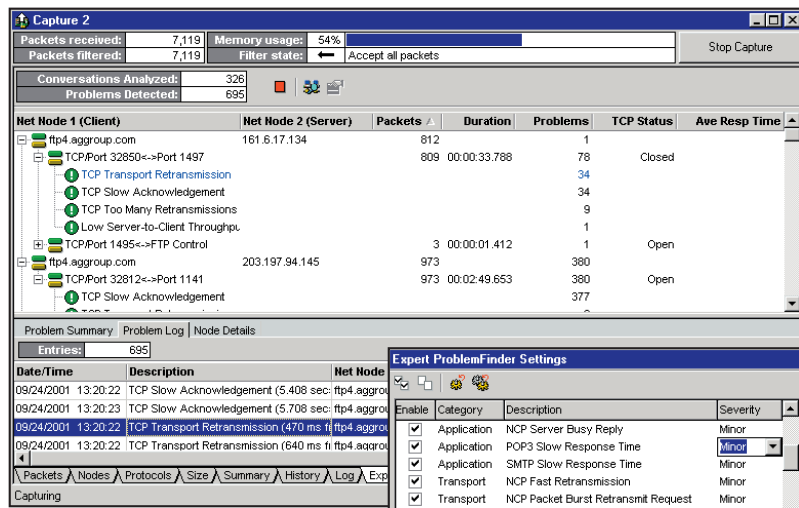
Network Magazine Product of the Year May 2002

"EtherPeek has long been known for excellent decodes, and the NX version... offers added performance, IP networking utilities and expert analysis."

Network Computing "Well-Connected" Award Winner May 2002

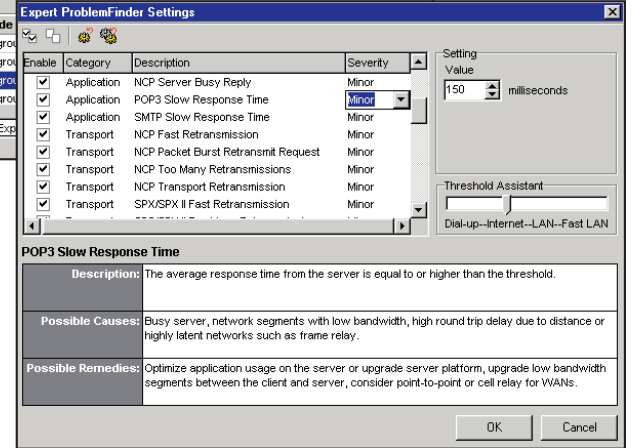
"The latest offering from WildPackets, one of the main players in the network analysis arena, provides real-time packet decoding and analysis. Keeping WildPackets' intuitive, easy-to-use GUI, EtherPeek NX is a breeze to use, and the data it can provide is astounding."

InfoWorld, November 2001



The Expert Problem-Finder™ below, describes possible causes and remedies for your network.

EtherPeek NX places the expert analysis information into a conversation-centered, intuitive tree structure, shown above.



Expert Mapping

The EtherPeek NX Peer Map shows all communicating nodes within your network and is drawn as a vertically-oriented ellipse, able to grow to any size necessary. Reading the peer map is easy: the thicker the line between nodes, the greater the traffic; the bigger the dot, the more traffic through that node. The number of nodes displayed can also be limited to the busiest and/or active nodes, or to any EtherPeek NX filters that may be in use. Protocols in use by nodes show up in a protocol legend at the side of the peer map. Nodes can be displayed by physical, IP, or IPX address; selecting the type of address also determines which protocol stacks are displayed in the map and in the protocol legend. Nodes can also be hidden to increase focus on a few problem nodes.

Application Level Analysis

The EtherPeek NX Expert ProblemFinder, shown above, analyzes application layer client/server problems including busy networks and servers, inefficient clients, low throughput and latency. In order to quickly assess overall network performance, and easily identify application problems or client/server communications problems, EtherPeek NX calculates the send/receive statistics for all stations, including averages and ratios. Each individual conversation is analyzed independently for response time (latency) and throughput.

Custom Expert Settings

Each of the over fifty Expert ProblemFinder settings in EtherPeek NX can be enabled or disabled at will. Many of the settings have additional metrics that can be invoked, such as an absolute threshold or sensitivity option. The Threshold Assistant™ helps to easily determine settings that are right for your network environment and the Expert Memory™ allows you to set the amount of memory available to Expert Analysis functions. The Expert Problem Finder also includes information describing the networks or application issues at hand, possible causes, and possible remedies.

Multiple, Simultaneous Capture Windows

As with all WildPackets "Peek" products, EtherPeek NX has the ability to open multiple live capture windows simultaneously. This means that new capture windows can be created in real-time to focus on specific traffic elements discovered in an overall traffic capture window. In addition, EtherPeek NX's NetSense Technology provides independent expert and Peer Map analysis of all open capture windows. You can also easily replay existing trace files for NX analysis. This is a great way for network engineers to examine shared traces...even those from other protocol analyzers!



Features

EtherPeek NX Benefits

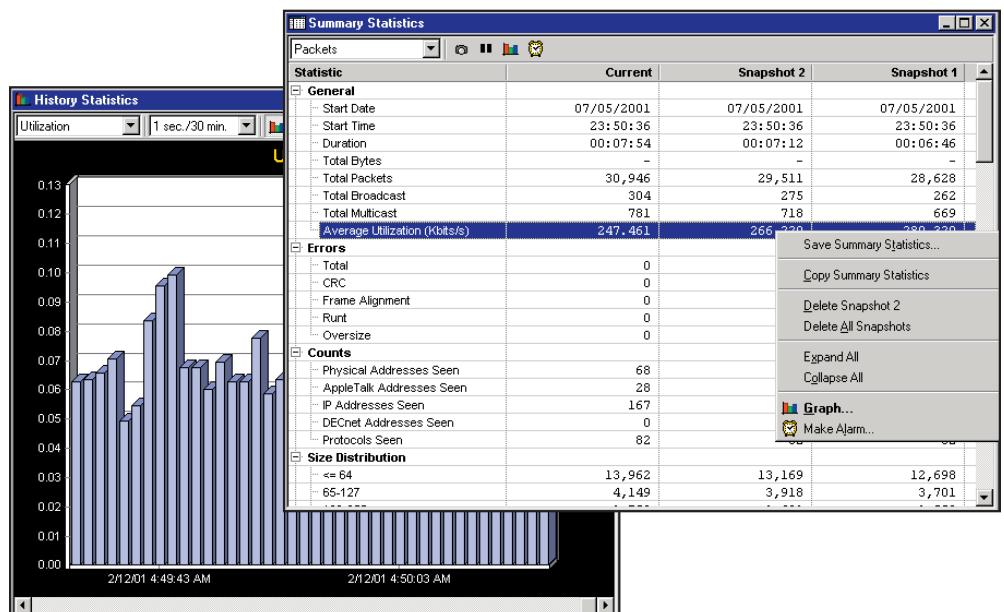
Expert Analysis	Provides Automated Problem Identification on your network. Evaluates and analyzes all 7 layers of OSI model, separates packets into independent conversations, analyzes device by device to isolate problem behavior, describes behaviors indicative of network, client, server, router, or infrastructure problems.
Expert ProblemFinder	Allows user to customize behavior of expert system in order to tailor it to the characteristics of his or her own network. ProblemFinder also provides descriptions, causes, and remedies for each of the problem conditions the expert system encounters.
Threshold Assistant	Allows the user to quickly adjust problem solver values by choosing network speed, and using built-in real world networking experience algorithms.
Peer Map	Provides a visual display of all conversations seen on the network, allowing the user to quickly breakdown network traffic, identify top talkers, and drill down into protocols and packet transmission statistics.
Multiple capture windows	Each capture window can have its own filters, expert analysis, peer map, etc. Useful for monitoring different application servers, comparing traces for client and server, and starting new captures to isolate problem devices while maintaining network capture buffer simultaneously.
Enhanced Alarms	EtherPeek NX provides alerts to over 100 real-time conditions tracked by the alarm system. EtherPeek NX has added the ability to set 3 conditions - Suspect, Problem and Resolved - providing finer control over when a particular condition should be considered informational, minor, major or severe.
Analysis Modules	EtherPeek NX was designed from the ground to be both extensible and modular. This allows the user to actually modify the behavior of EtherPeek NX, to add new analysis capabilities for specific protocols and applications, optimize application performance, and more.
"Select Related" filtering	This exclusive feature provides a one-click means of extracting the precise packets the user is looking for. The user can quickly select the packets corresponding to specific hosts, protocols, conversations, and even expert problem reports.
Standard and Extensible Protocol Decoders	EtherPeek NX accurately decodes hundreds of network, transport and application protocols. With clearly presented displays of packet contents, a user can more readily troubleshoot a network or track down a security breach. Standard protocols can be customized or extended with the Decoder SDK that accompanies every EtherPeek NX purchase.
Customizable, multi-view display	Network engineers work differently. EtherPeek NX provides the user with the ability to customize the display to fit his or her preferences.
Summary Statistics	This window provides a real time tally of all the statistics collected by EtherPeek NX. This allows the user to quickly see and graph everything that is happening on the network, including the output of the Expert analysis.
Enhanced Report Generation	HTML and XML output provides the user a real-time view of global or capture-specific statistics. Useful for remote monitoring and management reports.
Developer's Kit	Includes a "plug-in wizard" to enable you to create custom analysis modules and the tools necessary to develop specialized decodes.

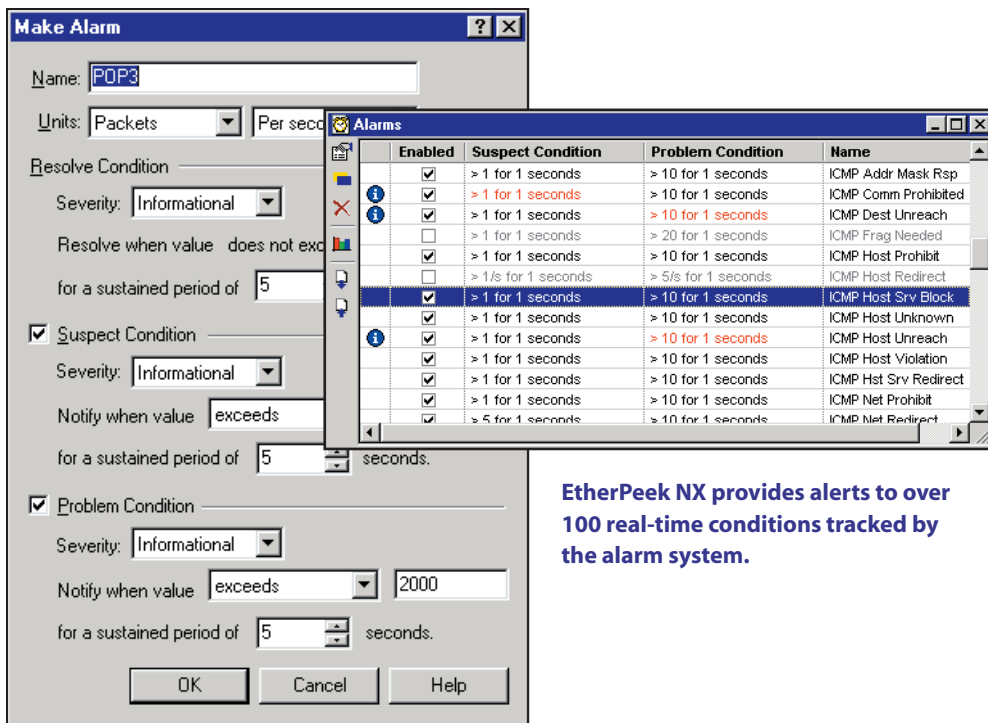
Targeted Remote Packet Capture

PacketGrabber™, included with each copy of EtherPeek NX, extends your ability to troubleshoot enterprise networks by easily gathering trace files from workstations on remote segments. These trace files can then automatically be sent via email, ftp, or shared volume to a network engineer for expert analysis in the award-winning EtherPeek NX.

Analyze Network Trends

Sophisticated graphing and trending features allow the analysis of any node, protocol, network or summary statistic. This data can be collected, displayed, saved and analyzed over a user-specified period of time. View trends through a variety of graph options from within the program. Output data in enhanced XML format for web access, or save statistics in tab-delimited form that can be exported to an external charting application.





EtherPeek NX provides alerts to over 100 real-time conditions tracked by the alarm system.

Suspects Detected, Problems Diagnosed

The advanced alarm threshold notification options in EtherPeek NX include over 50 real-time or post-capture conditions tracked by the alarm notification system. These include bandwidth usage and error rate as well as specific numeric assessments such as, "How many times per second were ARP requests unresolved?" The advanced alarm threshold notification system comes pre-configured (with user-configuration easily performed) to identify not only the typical metrics and sophisticated threshold events, but to assess the significance of the expert system output as well. You will be notified (in a log, via email, or on your pager) that a Suspect Condition or a Problem Condition is occurring.

WildPackets Academy

WildPackets Academy offers comprehensive network analysis training, meeting the professional requirements of network managers at all levels. All course offerings are available in public venues and as customizable on-site programs. Course offerings include:

- Foundations of Network Protocol Analysis
- Network Troubleshooting Methods Using EtherPeek
- TCP/IP Protocol Analysis
- 802.11 Wireless Network Analysis Using AiroPeek

For complete course outlines and schedules, visit www.wildpacketsacademy.com.

Download a Demo!

Demos are available for all of our products at: www.wildpackets.com/demos

EtherPeek NX Product Maintenance

When you purchase EtherPeek NX, one year of Level I Maintenance is included in the purchase price. WildPackets' Maintenance Program provides enhanced levels of service and extends the benefits and product update period (Level II and Level III Maintenance).

Please visit www.wildpackets.com/support for details about our maintenance offerings.

Ordering Information

WildPackets products are available from our Channel Partners; by calling (800) 466-2447; directly from sales@wildpackets.com; or from the electronic purchase area at: www.wildpackets.com.

Network Analysis Expert Certification

A properly qualified networking professional is the best person to support today's complex computer communication infrastructures. The Network Analysis Expert Certification Program is completely vendor-neutral, and is positioned as an industry-standard method for demonstrating protocol analysis expertise. Please visit www.nax2000.com for more information.

WildPackets, Inc.

Since 1990, WildPackets has been developing powerful, affordable tools designed to simplify the complex tasks associated with designing, maintaining, troubleshooting and optimizing computer networks.

Solution Suites

Our solution suites perform a variety of network management tasks, including: performance management, fault management, throughput analysis, trend analysis and more. They are available for purchase in various configurations: single license, site license and bundles.

Our representative solution suites include:

Wireless Analysis
Remote Analysis
Gigabit Ethernet
Network Management Suitcases
Training Bundles

For more information, visit www.wildpackets.com/products



Awarded May 13, 2002
for EtherPeek NX v1.0



Awarded May 2002
for EtherPeek NX v1.0

WildPackets

www.wildpackets.com