

WildPackets

Products and Services

WildPackets – Network Protocol Analysis, Network Troubleshooting, Network Management, Network Analysis Expert, Training, and Consulting
<http://www.wildpackets.com/>

BMNET SEC SF Gate GettyOne Eyewire Apple Ryan Dev Vicky Dev WildPackets Live

WildPackets
 "Resolving one problem pays for the EtherPeek software."
 - Bruce Stone, Veritas Platform Systems

Corporate Products Services Support Partners Purchase

Search Downloads Contact Us Site Map View Cart

The New Leader in Network Analysis

WildPackets Inc.

WildPackets, Inc. is a customer-driven, world-class provider of affordable network analysis and management software. Our products allow IT professionals to easily manage, monitor, analyze, troubleshoot, optimize, and expand their wired and wireless network infrastructures. Since our founding in 1990, our goal has been to simplify the complex tasks associated with managing computer networks, and to provide unsurpassed product quality and services at a fair market price.

Today, the company is an increasingly diverse organization with core competencies that include packet analysis, packet-stream assembly, professional services, and industry-leading customer support.

WildPackets products are sold in over 50 countries worldwide.



Selected May 2002
EtherPeek NX version 1.0

World-Class Products and Services



Real-Time Expert

"EtherPeek NX is priced aggressively for a full-featured protocol analyzer with so many expert analysis features. Enterprises needing the ability to get to the root cause of network problems should consider this system seriously."
[View information...](#)

Quick Links

2003 Roadshow Dates and Locations
[WildPackets Academy Courses Class Schedule](#)
[Download eAdvisors](#)
[Expert Network Analysis EtherPeek NX™](#)
[AnnPeek NX™](#)

News & Events

WildPackets in the News

January 6, 2003
 WildPackets Announces 2003 Road Show - [Full Story...](#)

December 17, 2002
 WildPackets Ships New EtherPeek and RINGROOPER™
 New Releases Feature Multiple NIC Support and Easy Remote Packet Capture - [Full Story...](#)

November 20, 2002
 WildPackets Announces NX Deployed 4x Agent Interoperability Certification Link - [Full Story...](#)

Events

January 21, 2003
 Check out the upcoming Products at Network World's FREE "Voice over IP: The Right Time for a Rollout" event. - [More...](#)

Corporate Products Services Support Partners Purchase

Copyright 2003 WildPackets, Inc. - [Privacy Statement](#)

www.wildpackets.com

For the latest updates on WildPackets products, technical support and service offerings, please visit www.wildpackets.com

About WildPackets

WildPackets Is the New Leader In Network Analysis. An established, stable company, WildPackets has been providing network analysis solutions for over 13 years. Growing and profitable, WildPackets' customer list is comprised of over 5000 distinct organizations, including 80% of the Fortune 1000, and enjoys a customer renewal rate greater than 90%.

Built by network professionals for network professionals, WildPackets understands the IT challenges facing enterprises today. WildPackets' products address the burdens of increasing network complexity, limited technical expertise, mission critical applications dependent on network uptime, and budget constraints. Our solutions are innovative, intuitive, and cost-effective.

WildPackets Products

WildPackets develops solutions designed to simplify the complex tasks of network management, including implementing, securing, and troubleshooting network systems. Developed with cutting-edge technology, designed for ease-of-use, and priced fairly, our products enable all levels of IT Professionals to manage their continuously evolving wired and wireless networks. Our technology provides greater real-time visibility into the network, precision expert analysis, and a superior user interface that reduces training costs and quickens problem resolution time.

AiroPeek NX

Expert 802.11 Wireless LAN
Network Analyzer

AiroPeek

802.11 Wireless LAN Protocol Analyzer

RFGrabber

Distributed WLAN Analysis Probe

EtherPeek NX

Expert 10/100/1000 Ethernet
Network Analyzer

GigaPeek NX

Expert, Full Duplex Gigabit Ethernet
Network Analyzer

EtherPeek

10/100/1000 Ethernet Protocol Analyzer

EtherPeek for Macintosh

Ethernet Packet Analyzer

RMONGrabber

RMON Capture Module for EtherPeek NX

PacketGrabber

Remote Packet Capture Application

iNetTools

Menu-driven Testing Tools For Internet
and IP-based Networks

NetDoppler

Performance and Application Analysis Tool

NetSense

Post-capture Expert Network Analyzer

PacketScrubber

Selective Trace File Data Removal Tool

ProConvert

Packet Trace Conversion Tool

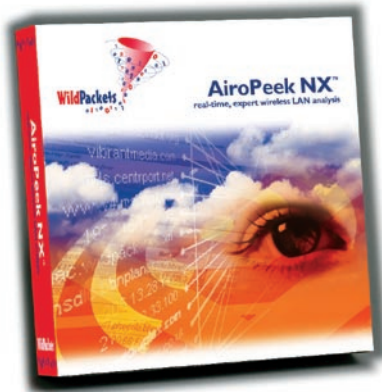
AiroPeek NX

Real-time, expert wireless LAN analysis

AiroPeek NX, WildPackets' expert wireless LAN analyzer, is the only wireless LAN analyzer, is the only wireless management tool needed to deploy, secure, and troubleshoot your wireless LAN. Only AiroPeek NX covers the full spectrum of wireless LAN management, including site surveys, security assessments, client troubleshooting, WLAN monitoring, remote WLAN analysis, and application layer protocol analysis. AiroPeek NX allows IT professionals to manage every segment of their extended network with powerful problem-detection heuristics and 802.11-specific diagnostic capabilities.



Awarded April 2003
for AiroPeek NX 1.0



www.wildpackets.com

AiroPeek NX features:

- 802.11-specific Expert diagnostics
- Site survey and security audit features
- Channel signal strength meter with graphing and alarm setting capabilities
- Rogue access point detection
- On-the-fly and post-capture WEP decryption
- SSID Tree logical wireless network view
- Distributed analysis with RFGripper



Awarded May 2002
for AiroPeek NX 1.0

AiroPeek

Wireless protocol analysis

AiroPeek, a comprehensive packet analyzer for IEEE 802.11 wireless LANs, is designed to identify and solve wireless network anomalies. It quickly isolates security problems, fully decodes all 802.11 WLAN protocols, and analyzes wireless network performance with accurate identification of signal strength, channel and data rates. AiroPeek incorporates all of the network troubleshooting expertise familiar to users of our award-winning EtherPeek.

AiroPeek features:

- Full 802.11 WLAN protocol decodes
- Display of data rate, channel, and signal strength for each packet
- Continuous monitoring of network statistics in real-time
- Alarms, triggers, and notifications—all user definable
- Customized output of statistics (HTML, XML, text)
- SSID Tree logical wireless network view
- Distributed analysis with RFGrabber



AiroPeek has a BMW's upscale capabilities for network managers with Honda budgets. Building upon the clean functionality of its EtherPeek analyzer, WildPackets delivers a solid product that lets you monitor and analyze your wireless network."

Dave Molta, Network Computing



EtherPeek NX

Real-time expert network analysis

EtherPeek NX, WildPackets award winning 10/100/1000 Ethernet network analyzer, is the industry's leading network analysis tool. EtherPeek NX is innovative technology designed for today's networks, offering precision diagnoses and a real-time view of the network without missing a beat. Based on an intelligent system that analyzes a stream of packets to determine potential network problems, rather than relying on simple thresholds, EtherPeek NX boasts more TCP experts than any other analyzer. Furthermore, the EtherPeek NX interface is intuitive and easy-to-use, reducing training costs and increasing speed of problem resolution.



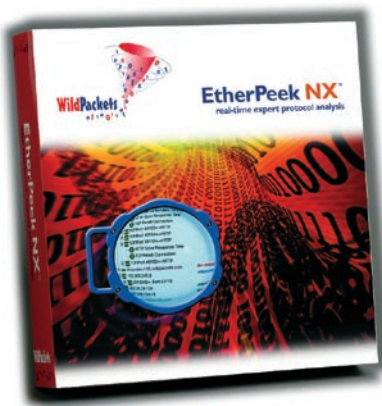
Awarded May 2003

EtherPeek v2.0 and RMONGrabber v1.0



Awarded May 2002

EtherPeek NX v1.0



EtherPeek NX features:

- Multiple NIC, remote capture and real-time capture
- Expert tracking of over 85 separate aspects of network performance
- Expert analysis of conversations, with problem summary, problem log, and node details
- Expert ProblemFinder settings with expert memory and threshold assistants
- Peer Map graphical display of all conversations
- Predefined and user-definable alarms
- iNetTools
- Real-time distributed analysis with PacketGrabber and RMONGrabber



Awarded May 2002

EtherPeek NX v1.0

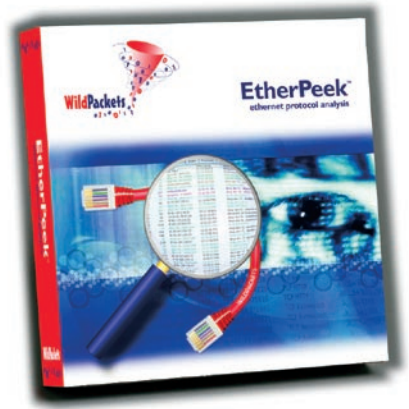
EtherPeek

Available for both **Windows**
and **Macintosh OS X**
Ethernet protocol analysis

EtherPeek is an award-winning Ethernet network traffic and protocol analyzer designed to make the complex tasks of troubleshooting and debugging mixed-platform, multi-protocol network applications easy. EtherPeek sets the industry standard for ease-of-use while delivering all the superior diagnostic and analysis capabilities expected of a full-featured analyzer at an affordable price.

EtherPeek features:

- Multiple NIC capture (not available on Macintosh version)
- Quickly isolates network trouble
- Customizable, multi-view display
- Easy-to use, customizable filters
- Multiple graphing and trending features to analyze network trends
- Real-time distributed analysis with PacketGrabber and RMONGrabber



“WildPackets’ EtherPeek earned the top spot in the competition for the breadth of protocols it could decode, its low cost, the ease with which we could navigate its screens to determine the cause of a problem, and the clarity of its reports.”

Network World Global Test Alliance



GigaPeek NX

GigaPeek NX is a full duplex solution that allows network professionals to capture data at line rate GbE speeds. This combined hardware and software solution is designed specifically for high-speed capture and analysis of real-time data in today's enterprise environments to help IT professionals conduct packet analysis and data monitoring in real time.

GigaPeek NX features:

- High performance optimized capture at Gigabit line rate
- Support for full duplex capture or monitoring on two channels
- Independent statistics in GUI for each channel
- Support for merging of two gigabit channels at hardware level
- Packet slicing and filtering support on hardware to reduce heavy traffic streams

RFGrabber

RFGrabber is a combination hardware/software solution, consisting of the RFGrabber Probe and AiroPeek NX. The RFGrabber solution fundamentally changes wireless network management by allowing IT Professionals to remotely analyze WLAN segments. RFGrabber allows you to troubleshoot widespread wireless networks or hotspots from a convenient central location, manage WLAN segments at the edges of the network from your desktop, and eliminate costly troubleshooting visits to remote or disparate WLAN locations

RFGrabber features:

- Scan for rogue access points
- Check signal strength
- Troubleshoot applications on a WLAN
- Verify security policy adherence
- Monitor client connectivity
- Gauge network usage



RMONGrabber

RMONGrabber is an RMON capture analysis module. It allows EtherPeek NX to acquire packets from RMON probes on remote network segments directly into local Capture windows. A network administrator can connect to an RMON probe in a remote office location and instantly view the packets in an EtherPeek Capture window. Problem situations can be identified without involving expensive and inconvenient off-site visits.

RMONGrabber features:

- Multiple NIC, remote capture
- Probe capture options
- Probe filter options

PacketGrabber

PacketGrabber provides the ability to extend the expert analysis capabilities of EtherPeek NX across the network, from the network core to the most isolated segments and everything in between. PacketGrabber's robust packet capture engine can be fully automated to capture only the packets needed for Expert Analysis with EtherPeek NX. The resulting trace file is then automatically forwarded via email, ftp or file server.

PacketGrabber features:

- Visibility into the desktop
- Multiple NIC support
- Remote network packet capture
- High-speed data capture
- Automatic file forwarding
- AutoCapture templates

Licensing

One copy of PacketGrabber is shipped with each license of EtherPeek and EtherPeek NX. Information on multiple and site license purchases available at www.wildpackets.com/products/packetgrabber/licensing



iNetTools

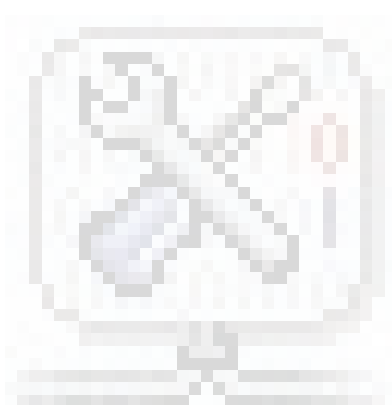
(Available for Windows and Macintosh)

iNetTools is an IP test utility suite consisting of a collection of menu-driven testing tools for Internet and IP-based networks. Menu access to the tools allows the network analyzer to easily send a Ping and watch the transaction with EtherPeek. iNetTools' well designed user interface cleanly displays information, eliminating the pain of remembering cryptic command-line parameter syntax. (iNetTools can be added to EtherPeek during the installation process to provide ready access to the various testing tools from within the program.)

iNetTools features:

- Trace route
- Name lookup, DNS lookup
- Name scan, port scan, service scan, ping scan
- Throughput analysis

ZDNet gave iNetTools a 5-star rating!

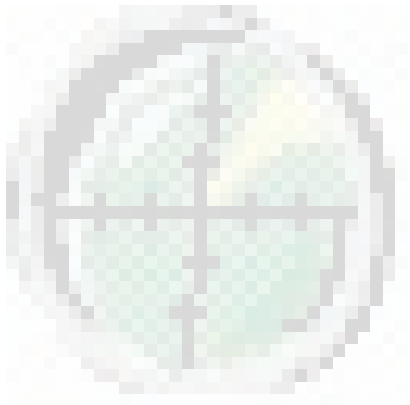


NetDoppler

NetDoppler is a powerful route discovery utility. It utilizes several features of the ICMP Echo (Ping), IP and DNS protocols to perform a variety of tasks and tests on remote hosts in order to check latency and throughput as well as isolate problems. Unique to NetDoppler is the ability to perform throughput tests based on both a single packet as well as packet streams to a remote host and back.

NetDoppler features:

- Latency measurements
- Throughput analysis
- Extensive statistic and graphing functions to easily interpret results



NetSense

NetSense is a post-capture Expert Network Analyzer. It provides an overview of wireless LAN traffic, offers expert collision analysis and performs expert analysis of peer-to-peer conversations on packets captured from over 30 different protocol analyzers. NetSense gives your network analyzer precise insight into protocol operation.

NetSense features:

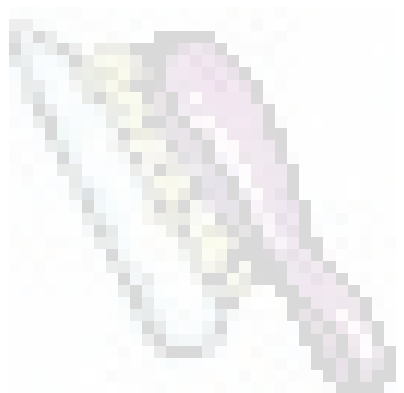
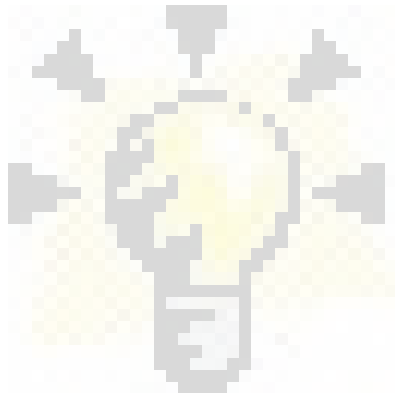
- Expert Client/Server network analysis
- Expert collision fragment analysis
- Network layer peer maps, ring diagnostic maps

PacketScrubber

PacketScrubber is a trace file utility that removes sensitive or confidential data from frames and packets by changing the packet and frame payloads to null data. In this way, trace files outside of your organization can be securely shared for analysis or troubleshooting purposes.

PacketScrubber features:

- SmartScrub technology scrubs frames on a selective basis
- Scrub layer by layer
- Scrub protocol by protocol



ProConvert

ProConvert is a powerful protocol analysis file converter that supports two-way LAN packet capture file interchange between over 30 different protocol analyzers and packet capture formats. ProConvert is highly recommended for those with more than one protocol analyzer platform.

Uses for ProConvert

- Share packet traces easily with other LAN/WAN analyzer users
- Convert 802.11 wireless LAN traces to 802.3 Ethernet format (data traffic only)
- Read Sniffer™ compressed packet traces with EtherPeek, TokenPeek and NetSense
- Get Expert opinions from multiple network analyzer platforms!
- Convert trace files for training purposes
- Impose packet slicing on existing trace files to reduce file size



WildPackets Academy

WildPackets Academy offers the most effective and comprehensive network and protocol analysis training available, meeting the professional requirements of any network manager. Our instructional methodology is centered on practical applications.

What sets WildPackets Academy courses apart from other protocol analysis instruction?

- Education and professional services led by published networking veterans
- A focus on education, not simply product training
- Intensive, vendor-neutral classes nationwide
- Vendor neutral certification and classes available nationwide
- Web-based or on-site classes available

WildPackets Academy Offers:

- A structured educational curriculum, providing the foundation for a full range of advanced offerings in specialized topics, including analysis methods for TCP/IP, full-duplex, switched Ethernet, LAN/WAN, and 802.11 wireless LANs.
- Expert, professional staff instructors that bring their consulting experience into the classroom
- Web-delivered training saves the time and expense of traveling to a classroom and receive the same great training!
- On-Site Training Programs: On-site delivery can be a cost-effective way to train small or large groups
- The T.E.N. Video Workshop is a comprehensive, interactive video program geared specifically to the Network Management Professional

Web-Delivered Training

WildPackets Academy delivers the following Network Analysis Courses* via the web: WP-101W, WP-101M and WP-105. Each class is delivered in five half-hour segments. Students log in using their browser to follow along with the presentation and live EtherPeek use. The instructor interacts in real-time with students, answering questions and demonstrating network analysis operations.

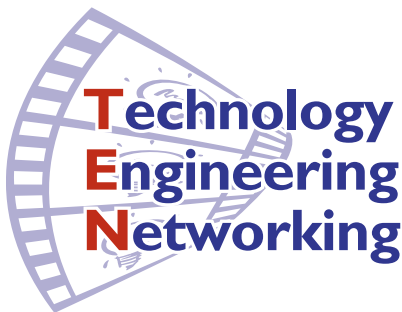


Web Delivered Instruction offers:

- A time-efficient method for networking professionals to get the protocol and network analysis instruction they need
- Local instruction, eliminating the expense of travel and out-of-the office time normally associated with class attendance.

On-Site and Custom Courseware Delivery

All standard WildPackets Academy courses can be offered for delivery at a customer's site (Standard Courseware Delivery). In addition, Focused Courseware Delivery is offered when it is necessary to compress the content of one or more courses into fewer days than are normally allocated. Custom Courseware Development involves the creation of new student materials, such as the addition of new topics to the student manuals, adding exercises to a course, or building delivery around customer trace files. WildPackets Academy also offers a 2-day and 3-day seminar in conjunction with the Technology, Engineering and Networking Video Workshop.



T.E.N. Video Workshop

This 5-Session, 14-Module self-paced program includes over 15 hours of lively lecture, white board discussion, and animated graphics to explain difficult protocol analysis topics. Participants work through numerous exercises in a student workbook and complete each Module by submitting answers to Challenge Questions to a NAX Mentor at WildPackets Academy. The modules in the T.E.N. program are consistent with the test material in the NAX certification program.

The Academy Curriculum Track

WildPackets Academy students may elect to register for a complete curriculum of training courses through the Curriculum Track Program. This all-inclusive educational series includes a personalized educational assessment, instructor-led classes from our standard curriculum, integration with the T.E.N. Video Workshop Series and a no-cost copy of the EtherPeek protocol analyzer software. Corporate and educational discounts are available for groups electing to pursue the Curriculum Track.



NAX™ Certification

A Network Analysis Expert Certificate is confirmation by the network analysis experts at Wild-Packets Academy that an individual is fully qualified to perform Ethernet or 802.11 wireless network protocol analyses. The NAX Certification Program is completely vendor-neutral and is positioned as an industry-standard method for demonstrating protocol analysis expertise. See www.nax2000.com for complete details.

Consulting Services

WildPackets offers a full spectrum of unique professional support services, available on-site as well as through remote dial-in service, ready for integration with your network management strategy. Our professional consultants will provide protocol analysis expertise for your network troubleshooting, capacity planning, or baseline performance analysis needs.

Vital Response

With WildPackets' Vital Response subscription service, we capture live traffic from your network and give you a general characterization of network performance and potential problems. The network experts at WildPackets can also provide you with expert insight as you design plans for network expansion, upgrade and reconfiguration.

Network Analysis Courses

WP-100: Foundations of Network Protocol Analysis

(2 days) The focus in our introductory course is on the OSI 7-Layered Reference Model, types of protocols that operate at each layer, the technologies used for interconnecting devices in a LAN, and the way that protocol analysis methodology can be applied to troubleshoot and analyze these complex communications systems.

WP-101: Network Troubleshooting Methods

(3 days) This course focuses on the application of protocol analysis tools to specific troubleshooting methods and proactive network performance assessment. Students are taught how to apply, use, and interpret the results from their analyzer tool. In addition, a focus on fundamental Ethernet and IP engineering provides the necessary base of knowledge to participate in the WP-103 "TCP/IP Protocol Analysis" class. Anyone with general networking experience needing to enhance network management skills will benefit from this class.

WP-101M: Troubleshooting Your Apple Network (web-delivered)

(5 half-days) Participants in the "Troubleshooting Your Apple Network" will learn field-proven methods for applying protocol analysis tools to the task of Apple network analysis. Features and functions of protocol analysis tools will be discussed along with the presentation of a perspective on typical network problems and challenges. In addition to exploring AppleTalk, the course focuses on TCP/IP communication and includes a general overview of other

common network protocols as well. Students are taught how to apply, use, and interpret the results from all the features and capabilities of their analyzer tool. In addition, a focus on fundamental Ethernet and IP engineering provides the necessary base of knowledge to participate in the WP-105 “AppleTalk, AppleShare IP, and Mac OS X Protocol Analysis Methods” class. Anyone with general networking experience needing to enhance network management skills will benefit from this class.

WP-101W: Network Troubleshooting Methods for Windows (web-delivered)

(5 half-days) This course focuses on the application of protocol analysis tools to specific troubleshooting methods and proactive network performance assessment. Students are taught how to apply, use, and interpret the results from their analyzer tool. In addition, a focus on fundamental Ethernet and IP engineering provides the necessary base of knowledge to participate in the WP-103 “TCP/IP Protocol Analysis” class. Anyone with general networking experience needing to enhance network management skills will benefit from this class.

WP-102: Emerging Ethernet Technologies: VoIP, Full Duplex, Gigabit, and Switching

(2 days) This course provides a solid foundation for understanding the practical methods for analyzing Ethernet-based networks using protocol analysis tools. The focus is on current and emerging technologies including Fast and Gigabit Ethernet as well as Voice Over IP communications. Older technologies, such as traditional 10 Mbps Ethernet, are covered only as a foundation for understanding current networks.

WP-103: TCP/IP Protocol Analysis Methods

(2 days) This course provides a solid foundation for understanding the practical methods for analyzing conversations and network statistics in TCP/IP networks. The focus is on the core IP and TCP functions and discusses analysis techniques for IP Subnet issues, routing, name resolution, dynamic address assignment, and reliable movement of data with TCP. Participants will learn the details of TCP sequence number and sliding window analysis.

WP-104: Advanced TCP/IP Protocol Analysis

(3 days) This course focuses on the methods used and engineering details involved in the analysis of TCP- and UDP-based applications like Telnet, FTP, Web browsing, mail, and network management. For each of the applications analyzed, the course presents the underlying technology and engineering along with specific troubleshooting and analysis methods. In addition, IP routing methods like RIP, OSPF, and EIGRP are discussed from the protocol analysis perspective.

WP-I05: AppleTalk, AppleShare IP, and Mac OS X (web-delivered)

(5 half-days) The “AppleTalk, AppleShare IP, and Mac OS X Protocol Analysis Methods” class is a hard-hitting, fast paced immersion into the protocols and behaviors specific to Mac-based networks. Each protocol in the AppleTalk, AppleShare IP, and Mac OS X environments is compared and contrasted and participants are shown how these protocols behave and interact. This course is designed for experienced EtherPeek users who need to understand the protocol-level interactions in their Mac-based networks.
Prerequisite: WP-101M

WP-I06 Wireless LAN Administration (Taught in a classroom facility)

(5 days) This course is a must-have for today’s wireless engineer. The Wireless LAN Administration training course provides the networking professional with a complete foundation of knowledge for entering into, or advancing in, the wireless networking industry. This course covers everything from basic RF theory to link budget math, and includes topics on troubleshooting and performing a site survey. Participants will also learn in-depth how to use AiroPeek NX. For those who don’t own AiroPeek NX, you will be given an evaluation copy of the product to use throughout the class.

WildPackets, Inc.
1340 Treat Blvd, Suite 500
Walnut Creek, CA 94597
main 925 937-3200
fax 925 937-3211
www.wildpackets.com

